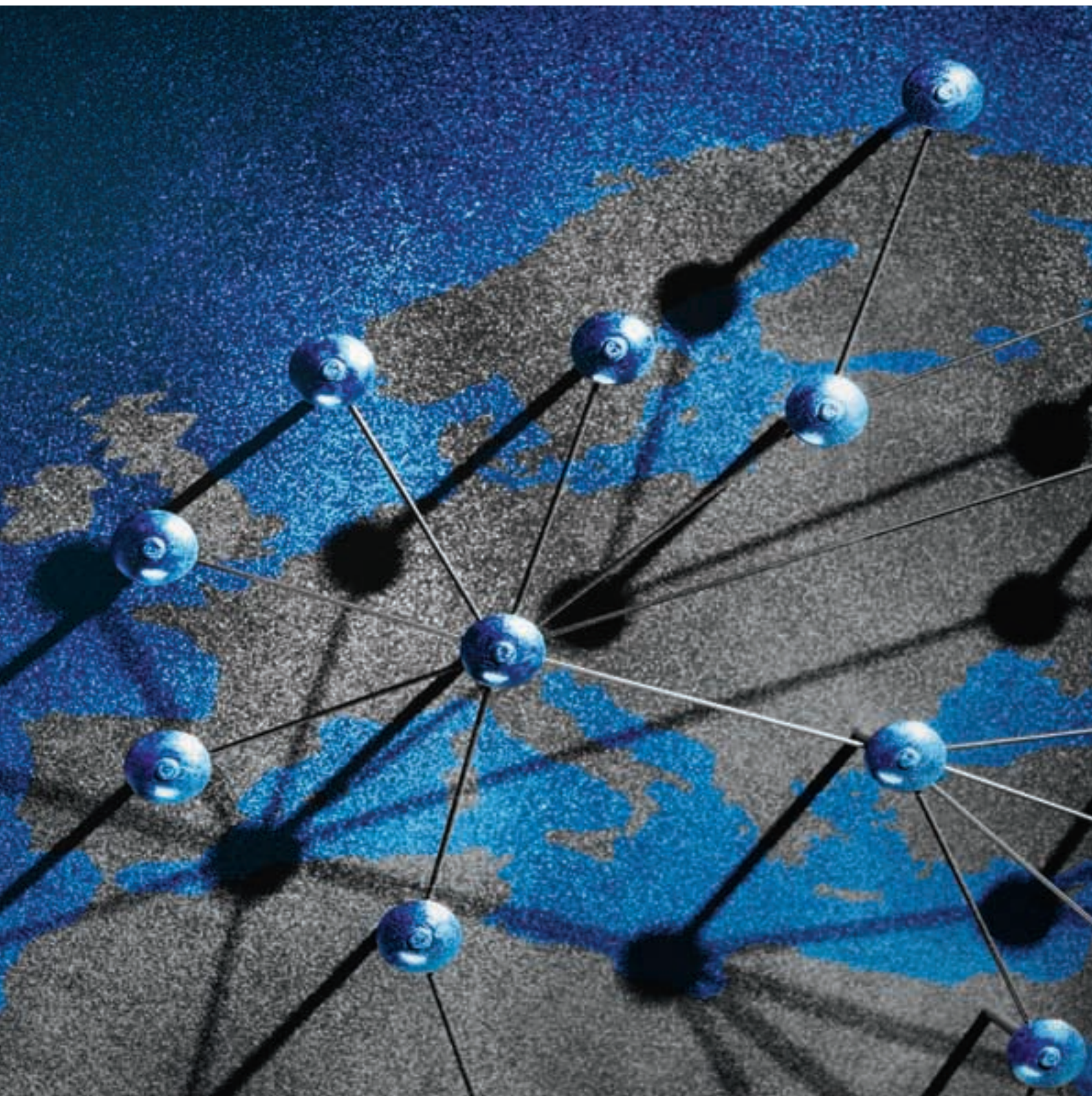
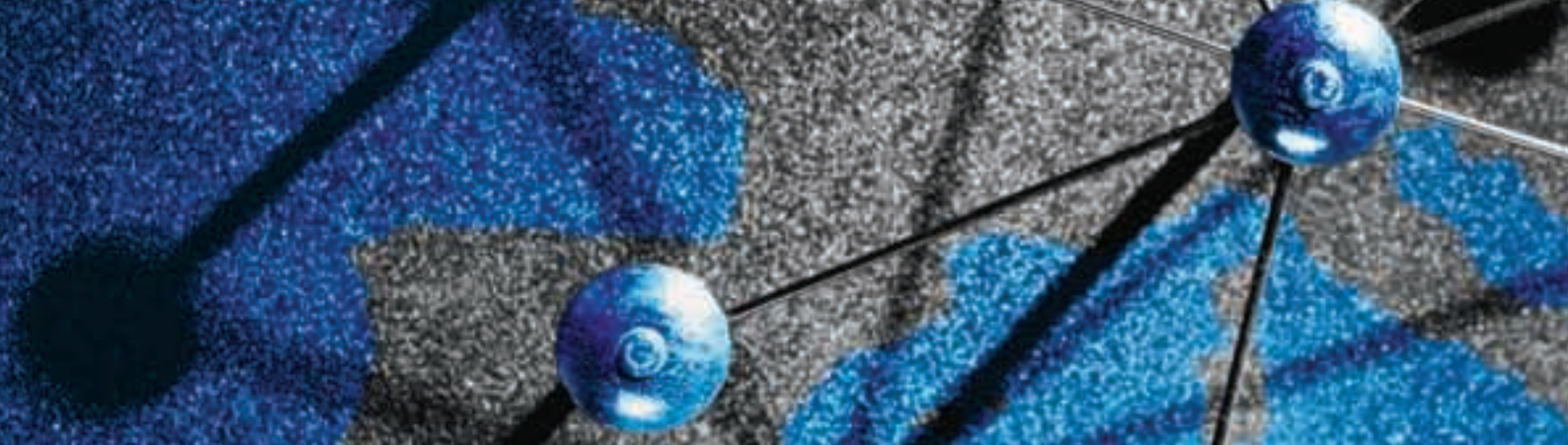




European Grid Initiative



Blueprint – In brief



Blueprint – In brief

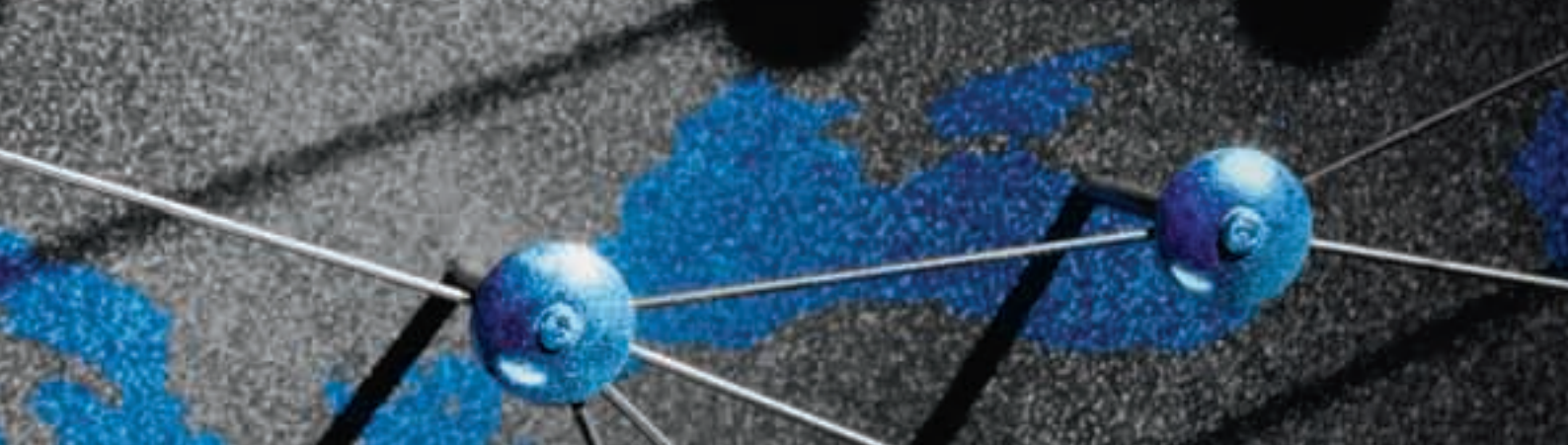
The EGI Blueprint document is a proposal to establish a sustainable, long-term grid infrastructure in Europe. It presents a vision of the transition towards the new EGI model, and includes practical information on the relevant requirements regarding the implementation, operation, user interaction with, and management of the corresponding infrastructure, as well as the preliminary budget outline. The EGI Blueprint final version was endorsed by the EGI Policy Board in Prague, on 20 January, 2009.

What is EGI?

The European Grid Initiative (EGI) is a partnership between National Grid Initiatives (NGIs), which are responsible for grid-infrastructure related matters in each participating country, and a coordinating body, the EGI Organization (EGI.org). It will begin full operation in 2010. Within the EGI partnership, NGIs and EGI.org will work together to operate and further develop a sustainable pan-European grid infrastructure, enabling optimal sharing of computing and data resources.

Towards a sustainable grid infrastructure in Europe

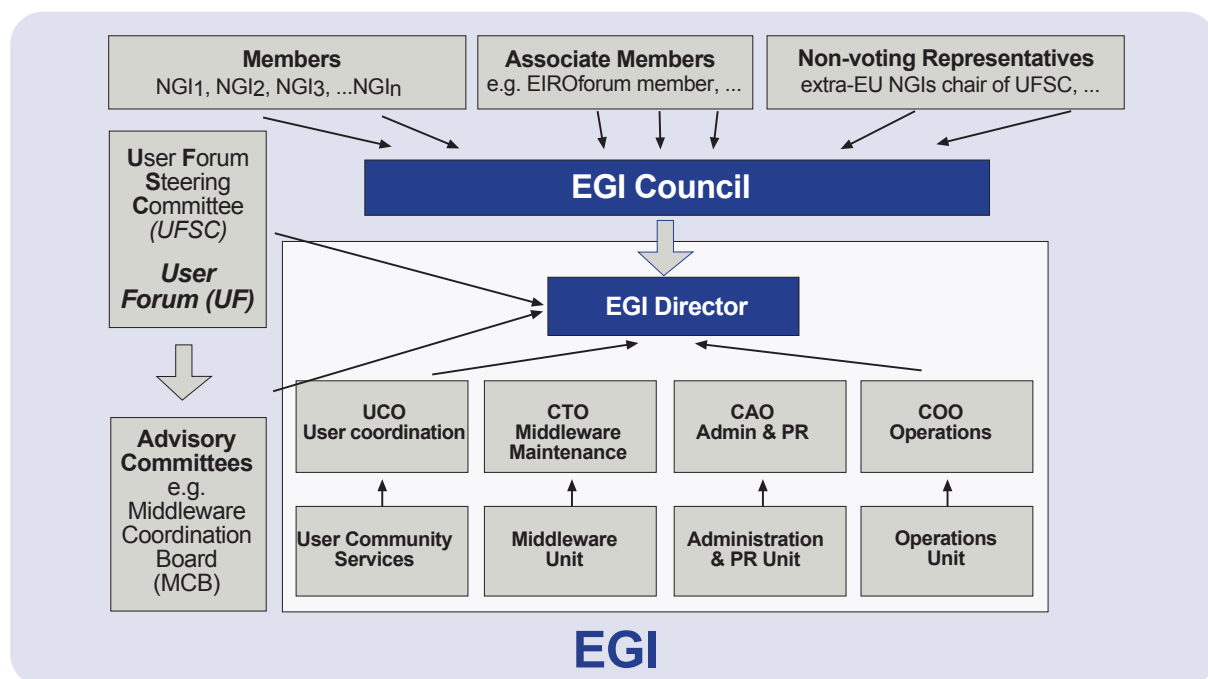
The European Grid Initiative (EGI) stems from a series of grid projects that began in 2001 with the European DataGrid (EDG) project. This was followed by the Enabling Grids for E-Science (EGEE) project and its second and third phases (EGEE II and EGEE III), which have provided a large-scale production-quality grid for scientists in Europe and beyond. EGI goes a step further by moving from a structure based upon short-term funded projects to a long-term service, with the creation of a new organizational model that will coordinate the existing resources and ensure the development of a sustainable grid infrastructure, enabling Europe to secure its leadership in e-Infrastructure. The transition from today's EGEE-based infrastructure towards the future EGI model began in May 2008, and will continue during the first three year phase of EGI (2010-2013). The number of NGIs contributing to EGI is expected to increase during that time.



The EGI actors

National Grid Initiatives (NGIs) are the main actors within EGI. They are autonomous, officially-recognized bodies that ensure the operation of the grid infrastructures in their own country, and an effective and transparent representation of the needs and wishes of their scientific communities, resource providers and e-infrastructure-related institutions. The activities of the overall EGI will be undertaken within each member state by the relevant NGI. **EGI.org** is the coordinating body responsible for managing EGI. It does not provide any IT resources. Its central role is to facilitate the interaction and collaboration between NGIs, and to provide a common managerial framework for the pan-European grid infrastructure. The **EGI Council** represents the top level management layer in EGI. It is made up of the NGIs, as well

as other members such as the Associate Members (i.e. European institutions represented in the EIROFORUM or ESFRI) and non-voting representatives of extra-European partner grid infrastructures. The **EGI.org director** provides the organisational interface to the EGI Council, to funding and policy bodies (such as the European Commission) and to several EGI committees on the one hand, and to heads of the EGI.org units on the other. User communities will have representation and support mechanisms in the **EGI User Forum (UF)** and will have a voice in the User Forum Steering Committee (UFSC) through the Specialised Support Centres (SSC). The **EGI Middleware Coordination Board (MCB)** is the EGI body that sets technical priorities and makes all decisions concerning the maintenance, support and evolution of the middleware deployed on the EGI e-Infrastructure.



The EGI.org Management Structure

How it works

EGI has defined **four main functions** which will have to be carried out if it is to achieve its primary goal: the **Operations and Security** functions, which include all the services that are required to provide a large-scale production-quality grid for science in Europe; the **Middleware** functions, which comprise all the tasks that are required to ensure the maintenance, support and interoperability of the middleware stacks currently deployed on the e-Infrastructure; the **User Community** services, which provide the essential interface and basic support for existing and new user communities; and the **External Liaison** tasks, concerned with project outreach and dissemination, and with maintaining relations with other relevant grids and organisations. For each of these functions, the bulk of the activities will be performed by the NGIs. EGI.org will, together with some other actors, carry out the tasks that are international in scope,

and will coordinate the work of the NGIs. Roles and responsibilities will thus be shared, split between the functions for which EGI.org is directly responsible and those left primarily to the NGIs, in which it has only an oversight role.

How it's funded

The long-term sustainability model of EGI relies primarily on the NGIs, which have long-term guaranteed funding at the national level. The computing resources will continue to be hosted and funded within the member states or the relevant international facilities. EGI.org, as the coordinating body, will be funded through membership fees paid by NGIs, with a contribution from the European Commission (EC), at least during the initial phase. It is expected that EGI will create synergies between the NGIs that would be impossible without the pan-European organisation, in this way offsetting the cost of the coordination body.

EGI Financial Reference Model

	NGIs International tasks		Middleware maintenance	EGI.org	Total
	Operations	User Services			
Costs					
EGI effort (FTE/year)	225	110	70	51	
EGI costs (M€/year)	20.25	9.90	6.30	4.59	41
Income					
NGIs membership fees (M€/year)				1.0	1
EC contribution (M€/year)	10.125	4.95	3.15	1.80	20
NGIs, Middleware consortia and EIRO/ESFRI co-funding contribution (M€/year)	10.125	4.95	3.15	1.80	20

More information:

www.eu-egi.eu/blueprint.pdf
contact@eu-egi.eu

www.eu-egi.eu