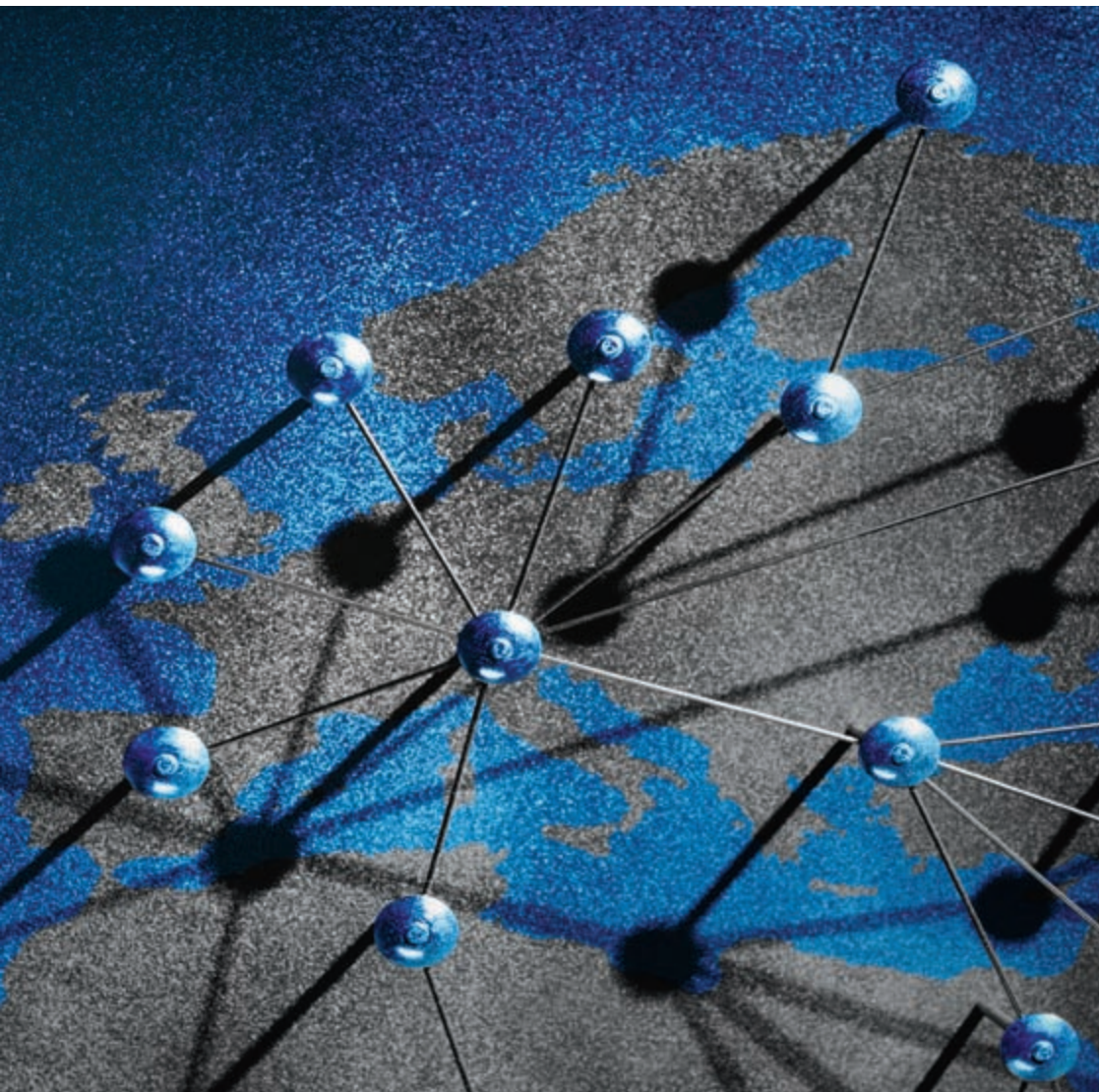
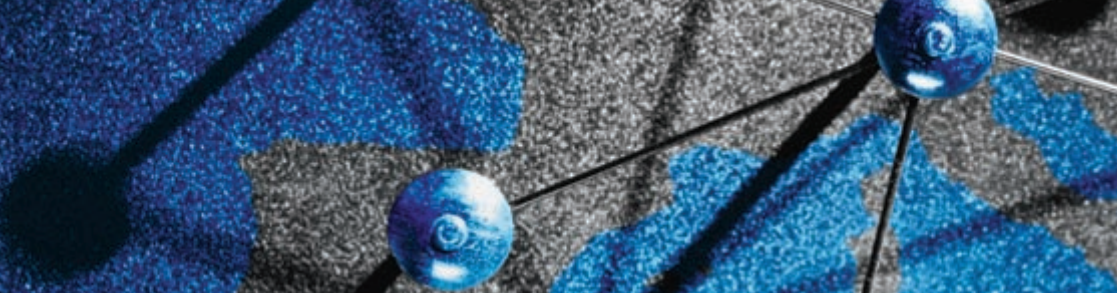




**European Grid  
Initiative**



**National Grid Initiatives – In brief**



## National Grid Initiatives

***Europe has invested heavily in e-science programs over the past years both at the national and the European levels with impressive results. Grid technology is recognised as a fundamental component of e-infrastructures. Driven by the needs and requirements of the European research community, the EGI Design Study (EGI\_DS) has defined a new organisational model for a long-term, sustainable pan-European grid infrastructure.***

### What is EGI?

The main objective of the European Grid Initiative (EGI) is to establish a sustainable grid service for the European scientific community, through the creation of a long-term, pan-European grid infrastructure. The European Grid Initiative (EGI) is a partnership between National Grid Initiatives (NGIs), which are responsible for grid infrastructure related matters in each participating country, and a coordinating body, the EGI organisation (EGI.eu), based in Amsterdam. Its central role is to facilitate the interaction and collaboration between NGIs.

***“NorGrid strongly supports the pan-European framework EGI, as it is currently being designed by the EGI Design Study.”***

Dr. Jacko Koster  
Norwegian NGI Representative

***“Grid-Ireland strongly supports the need for a pan-European coordinating body, such as that proposed by the EGI Design Study. National and cross-European scientific collaborations can exploit many of the benefits brought by current grid technologies.”***

Dr. Brian Coghlan  
Irish NGI Representative

It serves as a link between the NGIs, and provides a common managerial framework for the pan-European grid infrastructure. Within the EGI partnership, NGIs and EGI.eu are thus working together to operate and further develop a sustainable pan-European grid infrastructure, enabling optimal sharing of computing and data resources, and supporting collaborative scientific discoveries in the European Research Area (ERA).



## What is an NGI?

The main foundations of the EGI are the National Grid Initiatives (NGIs) that are responsible for grid infrastructures and services at national level in each participating country. NGIs have been launched all over Europe, and are committed to the EGI model that represents the next leap in research infrastructures and e-science. EGI.eu links the existing NGIs, and actively supports the set-up and initiation of new NGIs in countries where they do not exist yet.

NGIs are officially recognised bodies that ensure the operation of the grid infrastructures in their own country, and an effective and transparent representation of the needs and wishes of their scientific communities, resource providers and e-infrastructure related institutions. They provide a single point of contact in each country, which is fundamental for efficient coordination between the NGIs, users, resource owners and other interests.

***“BEgrid thinks that a sustainable European grid infrastructure is a must and hence supports fully the European Grid Initiative.”***

Rosette Vandembroucke  
Belgian NGI Representative

***“D-Grid welcomes the formation of a European Grid Initiative, as it offers the opportunity to enable seamless operation of Grids on a European scale by defining common services and interfaces. In addition, outsourcing of tasks like software and user support can increase the efficiency of national Grid operation.”***

Prof. Dr. Uwe Schwiiegelshohn  
German D-Grid coordinator

Within the EGI model, NGIs are free to organise and distribute their resources and services among their community as they want. Computing resources continue to be hosted and funded within the member states or the relevant international facilities.

EGI.eu is funded through membership fees paid by NGIs, with a contribution by the European Commission (EC) for related projects. EGI will create synergies between the NGIs that would be impossible without the pan-European organisation, in this way offsetting the cost of the coordination body. The NGIs own the EGI organisation and voice their views on major EGI strategy through the EGI council.

## **To become a member of EGI.eu an NGI must**

- have a mandate to represent its national research community in all matters falling within the scope of EGI.eu
- be the only organisation having the mandate described above for its country and thus provide a single contact point at national level
- be able to commit to EGI.eu financially i.e. to pay an EGI.eu membership fee, order EGI.eu services and pay for these services
- nominate a representative duly authorised to deliberate, negotiate and decide on all matters falling within the mandate of the EGI Council
- be a legal body or be represented by a legal body in order to commit to EGI.eu in the long-term
- have the capacity to sign the Statutes of EGI.eu – either directly or through a legal entity representing it.

## **Technically and organisation-wise NGIs ensure that**

- storage and computing resources are provided according to agreed conditions and standards
- the national grid Infrastructure is continuously operated and maintained to an agreed level of service
- user communities are registered and supported
- resource owners/providers are registered and supported
- standards, policies and other consensus accepted by EGI are implemented.



**More information:**  
[www.egi.eu](http://www.egi.eu)

