

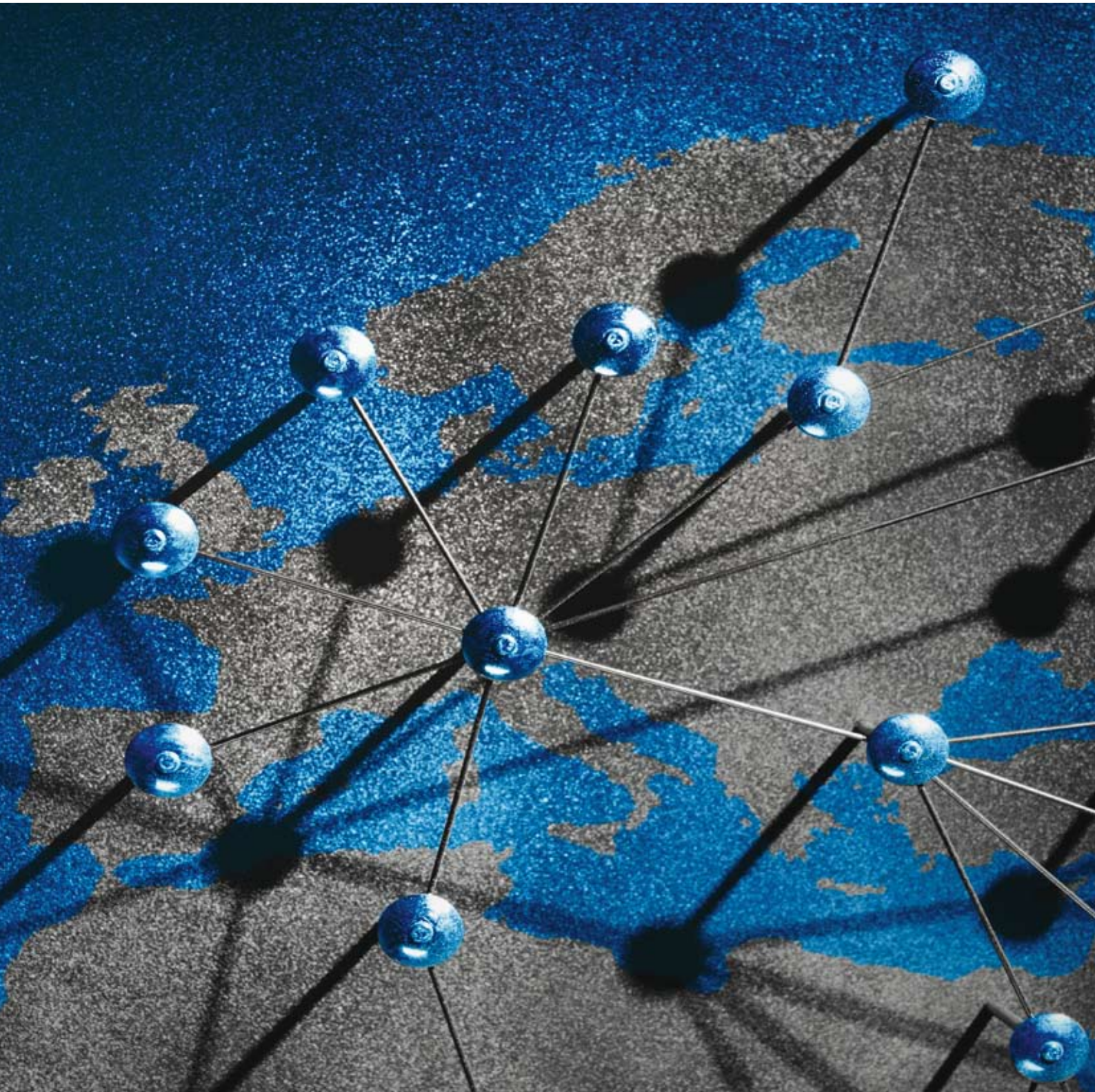
From

eGEE

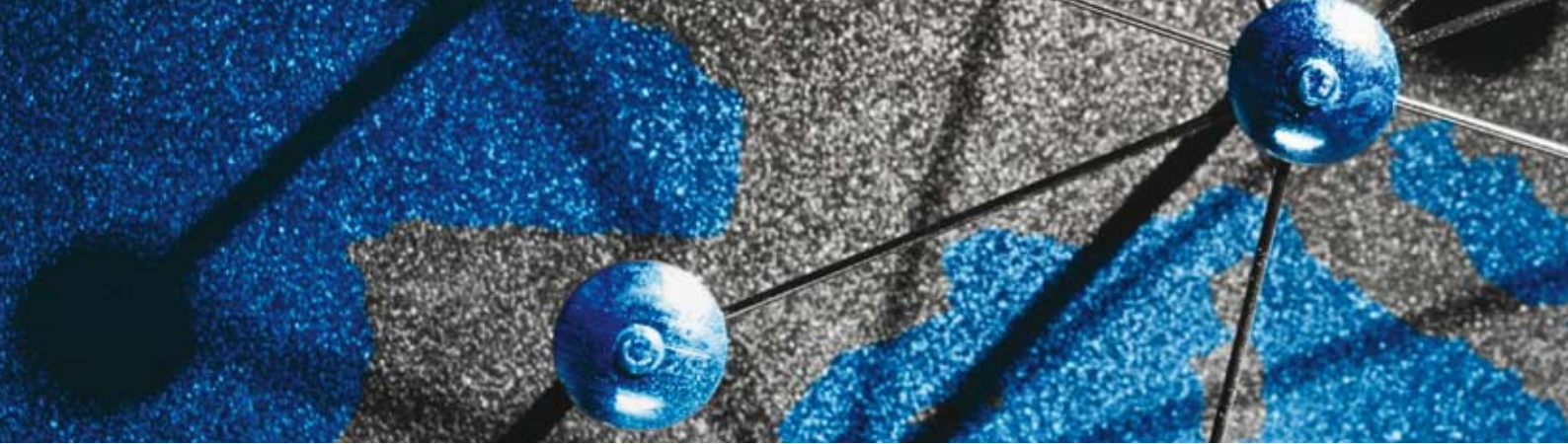
Enabling Grids
for E-science

to

eGI



**Supporting research and innovation,
now and in the future**



From EGEE to EGI Supporting research and innovation, now and in the future

Since its launch in 2004, the project **Enabling Grids for E-science (EGEE)** has managed the largest computing grid in the European Research Area with many additional sites connecting from the Americas, Asia and Africa. Working through internet connections, grid computing makes it possible for users to share computing power and storage. The EGEE infrastructure, with its secure computing, data storage and transfer tools and services, has become a crucial tool and network of support for many research communities, such as high energy physicists, computational chemists, life scientists and astrophysics researchers.

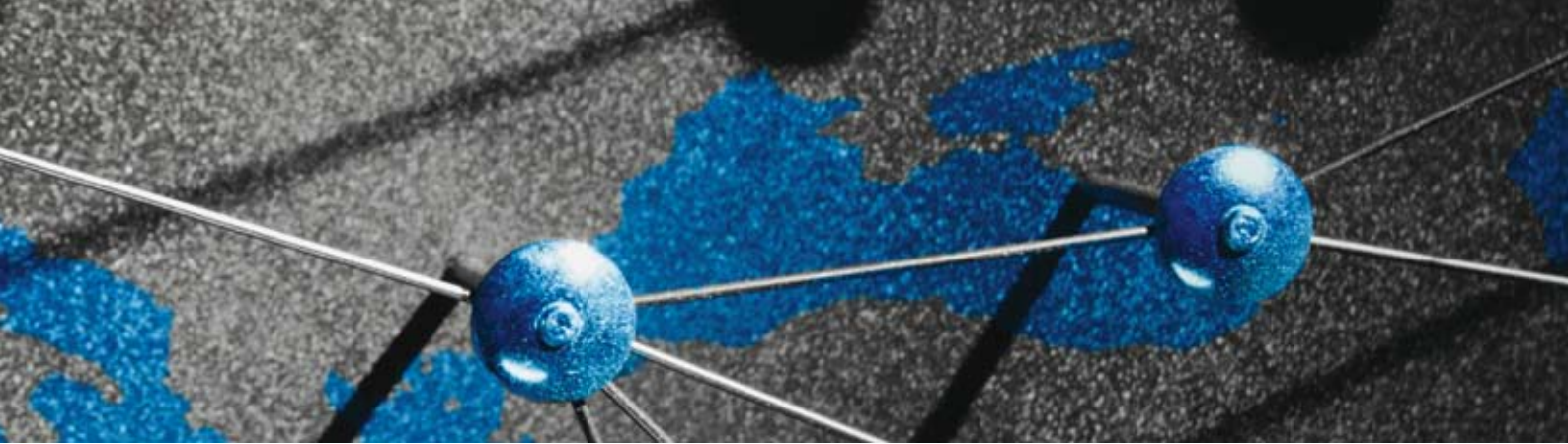
The EGEE project will come to a close at the end of April 2010. A new organisational model, implemented by the European Grid Initiative (EGI), will take over, and ensure the sustainability of the European grid computing infrastructure. The same tools and services will be available to users of the infrastructure, but under the management of the EGI.

The main objective of the **European Grid Initiative** is to establish a sustainable grid service for the European scientific community, through the creation of a long-term, pan-European grid infrastructure. The EGI Design Study (EGI_DS) project has been charged with defining and implementing

the EGI organization and activities, and is coordinating the efforts of the participating countries as they move towards the EGI model.

A new legal entity (the EGI organization, also referred to as EGI.eu) is currently being established in Amsterdam. It will act as the international coordinating body, and will be responsible for managing the pan-European grid infrastructure. Its central role will be to facilitate the interaction and collaboration between individual national grid infrastructures managed by the National Grid Initiatives (NGIs).

The EGI organization and the NGIs will work together to operate and further develop the pan-European grid infrastructure, in order to guarantee its long-term availability for performing research and innovative work, enabling optimal sharing of computing and data resources, across Europe. This includes not only operational aspects but also appropriate user support, certification, maintenance and operation of repositories of middleware and software components, and facilitating the launch of cooperative grids in new scientific domains, corresponding technological approaches and business models. The EGI infrastructure will become fully operational in early 2010.



The infrastructure in transition

1. Will my jobs still run? Will there be an interruption in services?

The goal of the EGI is to ensure as smooth a transition as possible, and it is expected that the current infrastructure remains operational at the beginning of EGI. Changes made in order to improve the service levels and quality will be applied incrementally after the start of EGI.

2. Will my grid certificate be still valid in EGI? Will the same authorities be responsible for issuing certificates?

Yes. This is a national activity that will not change due to EGI.

3. Will I submit my jobs through the same tools?

Yes. Because EGEE's infrastructure, with its associated services and support, will turn in to EGI, with new and improved services, jobs will be submitted through the same tools.

4. Will I be part of the same Virtual Organisation (VO)?

Yes. The setup of EGEE will be the starting point for EGI.

5. What will happen to my data?

The data located on the grid resources within EGEE will also be available on the EGI grid infrastructure, provided your resource provider continues to make the resources available to you through your VO. It is expected that the mechanisms to access your data will remain the same as during EGEE.

6. Will I still be able to access the same sites and resources?

Yes in general, but this depends on the willingness and ability of the NGIs and sites supporting your VO to join the EGI, as it is up to the NGIs to decide which resources to make available to each VO.

7. Who will I contact if I have problems?

Continue to use your existing support mechanisms – Global Grid User Support. Your NGI may also provide a helpdesk for local issues. Additionally, a number of Specialised Support Centres (SSCs) will be available to give dedicated help to specific communities. SSCs will fall into two broad categories: science SSCs which will build on the work of the current EGEE application (NA4) clusters and similar structures from other projects, and support SSCs which will help new communities get on the grid.

8. Will the quality of the infrastructure remain the same?

It is expected that the transition to EGI will provide an improved level of reliability and extended services.

9. What is the benefit of this new arrangement?

The e-Infrastructure that you use will move from EU project funding (temporary) to longer-term national funding. This will lead to a more sustainable funding model for the future. A lasting model will promote long-term science commitments from ESFRI projects (those within the European Strategy Forum on Research Infrastructures) and will assure researchers that their data will be safe for years to come.

10. What will the infrastructure look like in 2 years time? 5 years? 10 years?

This will depend to a large degree on the adoption, use and future requirements of you, the users, and from the

NGIs that provide the majority of the infrastructure in each country. However, assuming that the EGI works as predicted, the NGIs contribution is likely to increase over time. EGI will also gradually introduce new technology and extend the scope and interoperability of the infrastructure.

11. Where can I find out more?

Please visit www.eu-egi.eu or contact contact@eu-egi.eu. This FAQ will be made available online where it will be updated as further information becomes available.

12. If I'm just starting, who should I speak to if I want to get on the grid?

New users, institutions and projects interested in using the EGI infrastructure should contact the National Grid Initiatives in their members states. <http://web.eu-egi.eu/partners/ngi>



More information:

contact@eu-egi.eu

www.eu-egi.eu